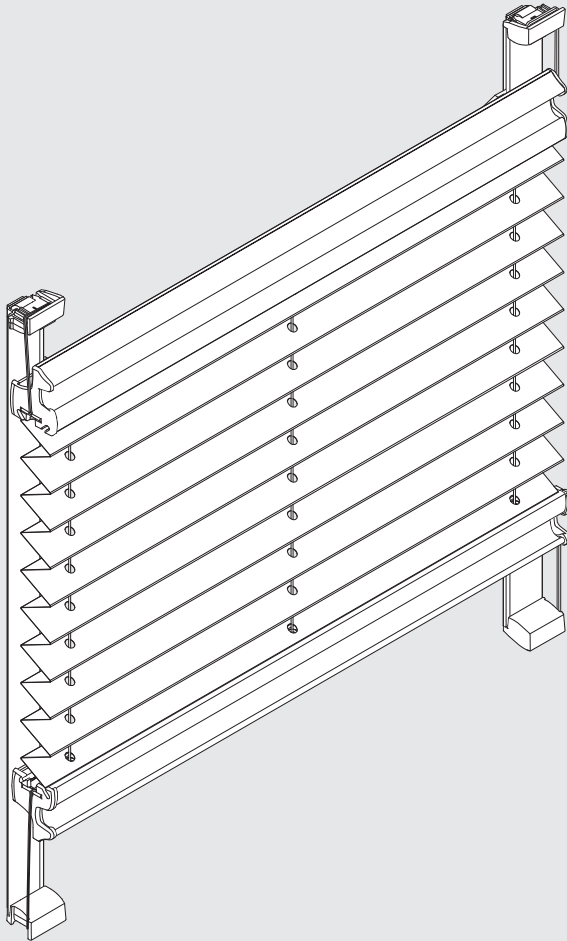
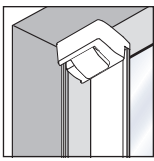


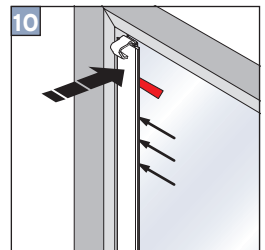
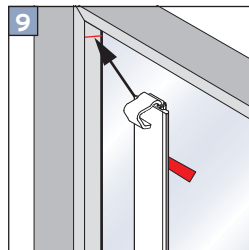
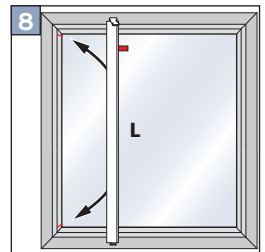
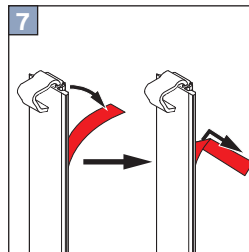
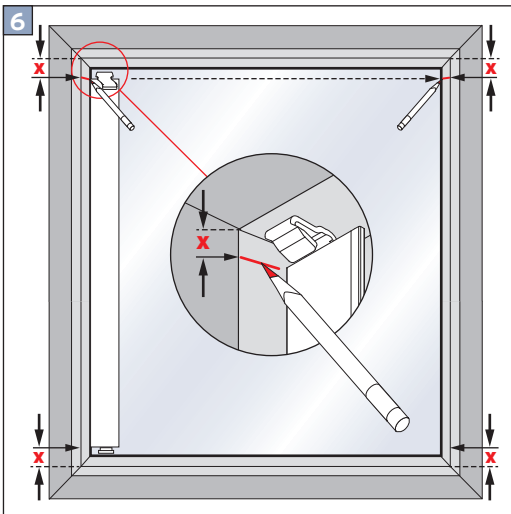
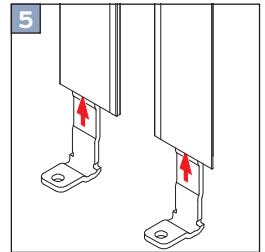
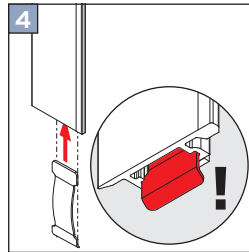
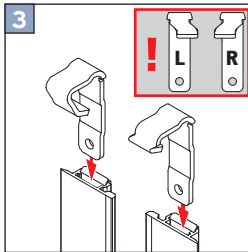
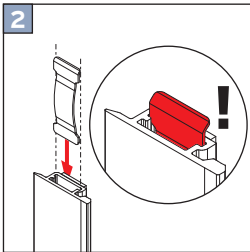
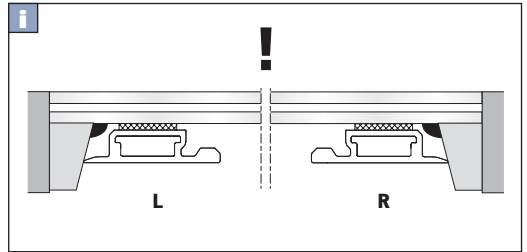
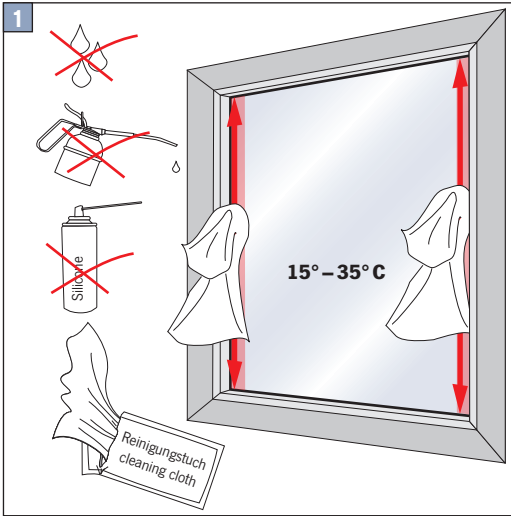
## VS 2 Slide Comfort

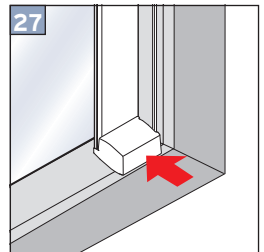
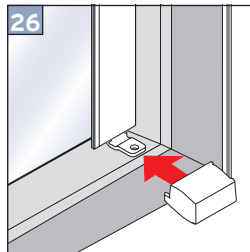
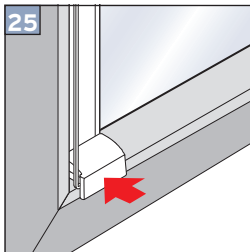
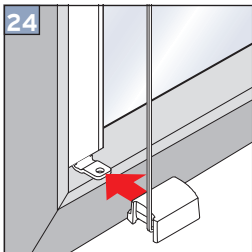
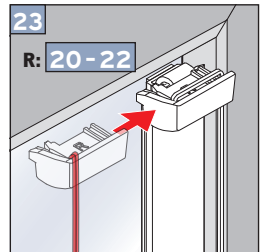
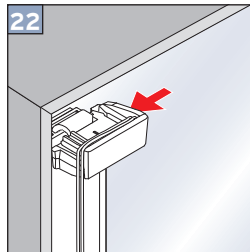
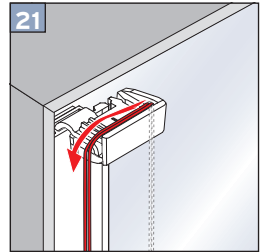
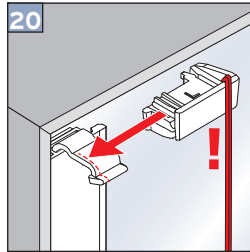
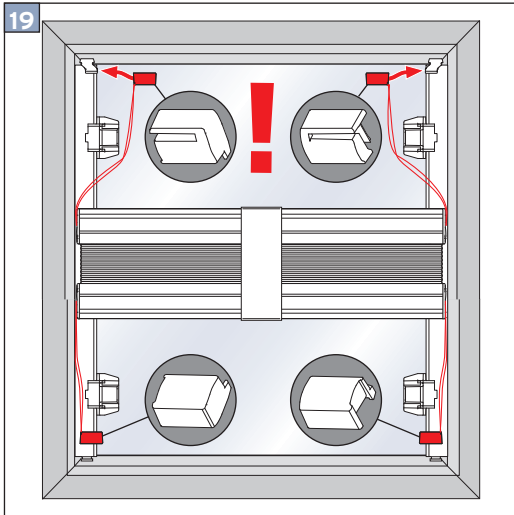
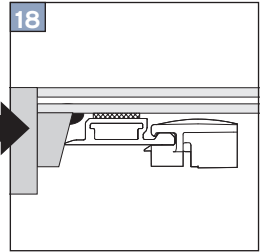
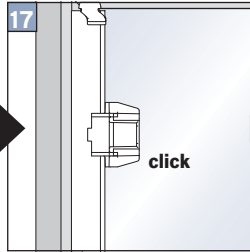
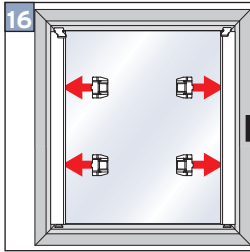
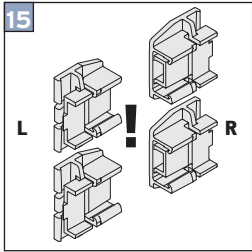
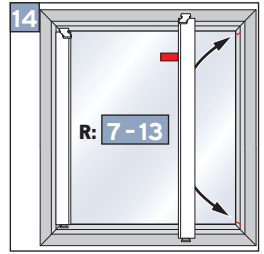
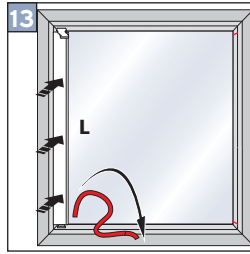
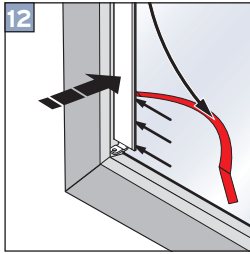
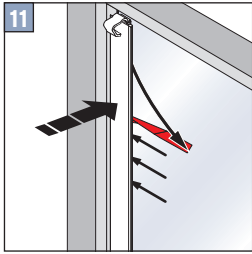


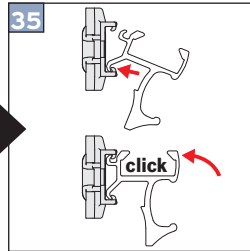
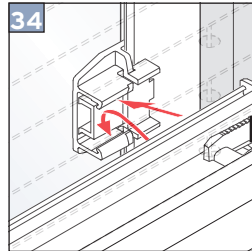
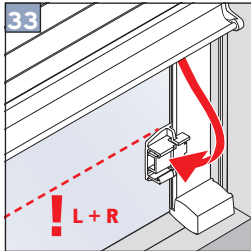
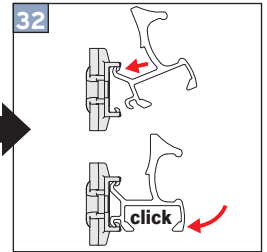
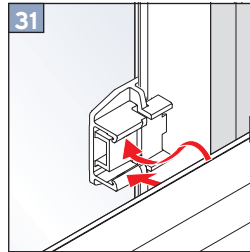
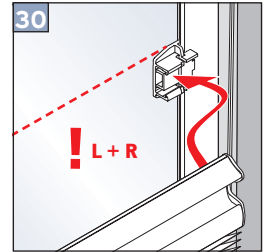
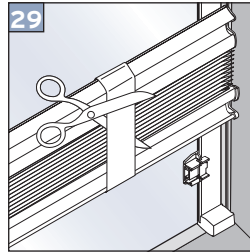
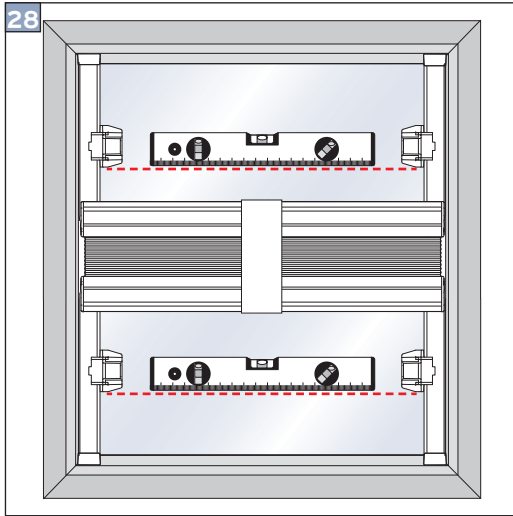
**Wichtig! Bitte mit der Pflegeanleitung aufbewahren! • Important! Please keep together with care instructions!**  
**Ważne! Proszę przechowywać z instrukcją pielęgnacji! • Внимание! Хранить вместе с инструкцией по эксплуатации!**



Klebemontage  
Adhesive mounting  
Montaż z listwą klejącą  
клеевой монтаж







**Wichtig! Important! Wazne! Внимание!**

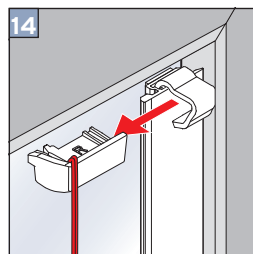
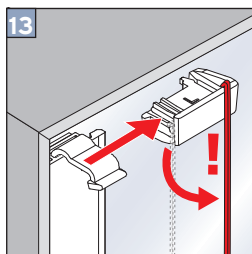
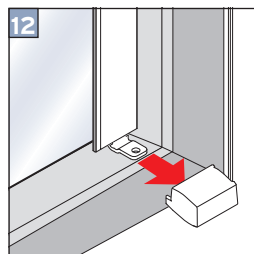
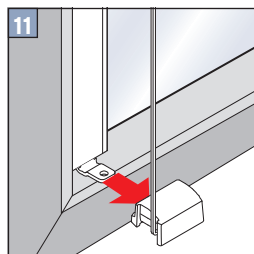
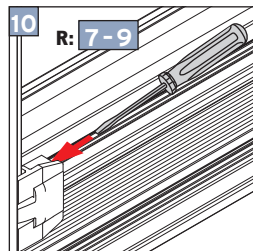
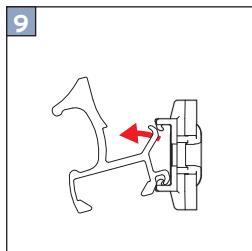
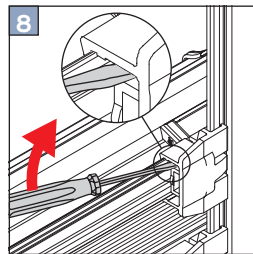
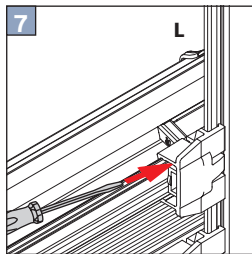
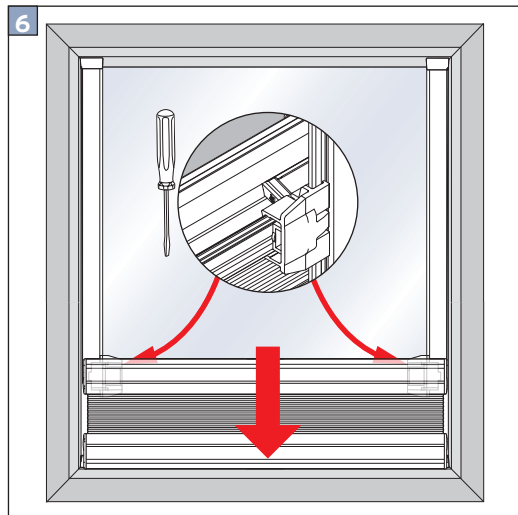
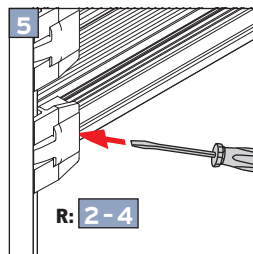
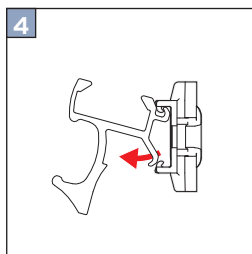
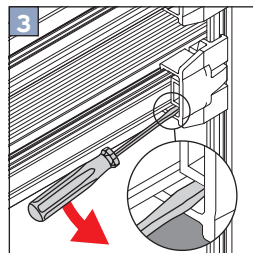
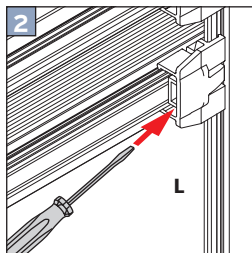
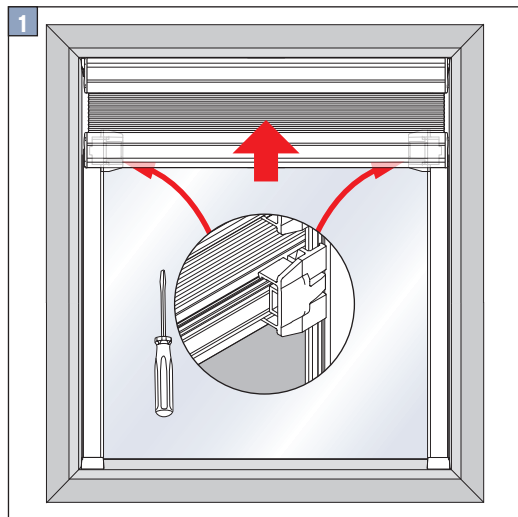
Lufteinschlüsse innerhalb der Klebefläche stellen keinen Reklamationsgrund dar, solange die Funktion des Profils nicht beeinträchtigt wird.

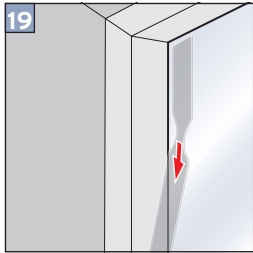
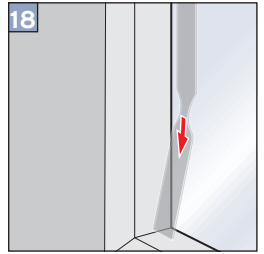
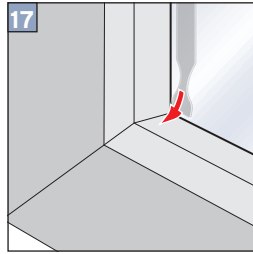
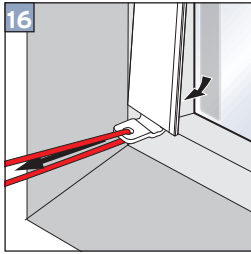
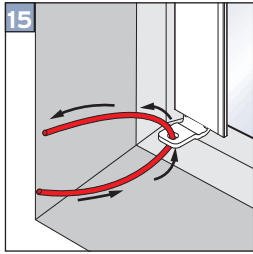
Entrapped air within the adhesive area does not constitute a reason for complaint as long as the function of the rail is not affected.

Pecherze powietrza w obrebie powierzchni klejonej nie stanowią podstawy do reklamacji dopóki nie wpływają one na funkcjonowanie profilu.

Воздушные пузыри на клейкой поверхности не являются основанием для предъявления претензии, если они не влияют на функциональность профиля.

Demontage • Disassembly • Demontaž • Демонтаж





**Option • Опција • Вариант**

